



Intel® IT Director Branding Guide

Version 1.5

May 2009



Table of Contents

Overview	4
About this Document	4
Intel® IT Director User Interface Overview.....	4
Intel® IT Director Co-Branding Logo.....	6
IT Director Co-Branding Logo – Technical Details.....	6
IT Director Co-Branding Logo – Four Step Guide	7
Intel® IT Director Branding Window	9
Intel® IT Director Branding Window	10
IT Director Branding Window – Technical Details	10
IT Director Branding Window – Four Step Guide	13

Figure 1: Intel® IT Director main user interface	4
Figure 2: Intel® IT Director co-branding logo area.....	5
Figure 3: Intel® IT Director branding window	5
Figure 4: Intel® IT Director co-branding logo area.....	6
Figure 5: Intel® IT Director co-branding logo optimal image dimensions.....	6
Figure 6: Intel® IT Director branding window	10
Figure 7: User interface – non-set focus example	10
Figure 8: User interface – set focus example.....	10
Figure 9: Intel® IT Director branding optimal image dimensions.....	11

Overview

Intel IT Director is a user-friendly software product that enables IT administrators at small businesses to easily configure and monitor computers on their network. The product is designed for use in Small Businesses without a dedicated IT professional.

About this Document

This document explains how to display two types of branding content on the IT Director main user interface. This document is intended for Intel® partners that plan to integrate branding material and create a custom Intel® IT Director product offering.

Intel® IT Director User Interface Overview

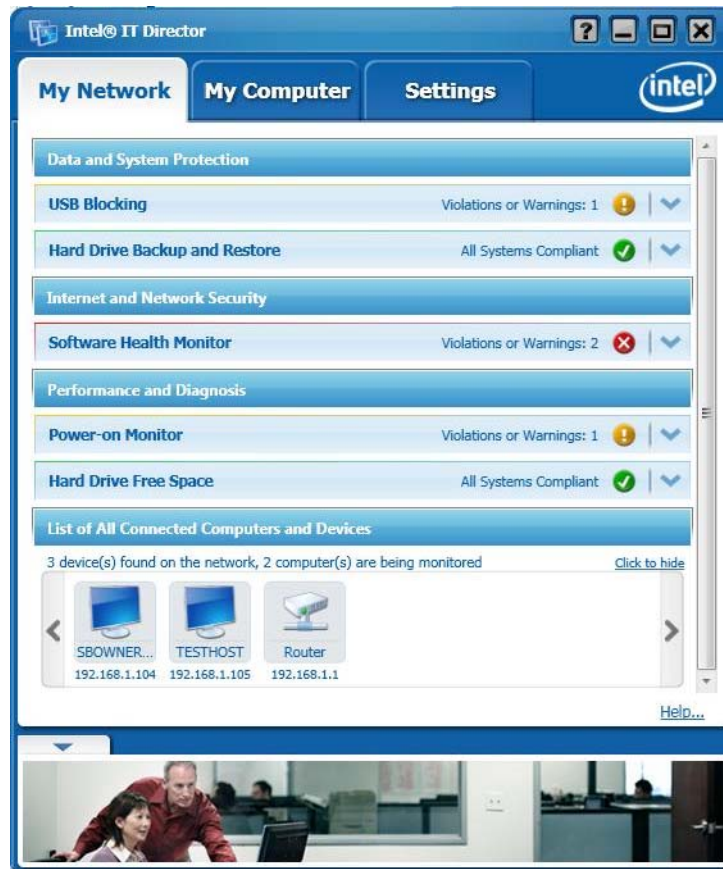


Figure 1: Intel® IT Director main user interface

Figure 1 is a static rendering of the Intel® IT Director main user interface. The interface contains three different tabs: The **My Computer** and **Settings** tabs enable configuration, and the **My Network** tab dynamically display a summary of the issues found in the Small Business Network.

On the main user interface there are two areas available for Intel® partner branding material.



Figure 2: Intel® IT Director co-branding logo area

The first is the co-branding logo area situated to the left of the Intel® logo at the top of the IT Director main user interface (see Figure 2). The co-branding area is visible at all times. Starting with IT Director version 1.5 Intel® partners can display a co-branding logo image next to the Intel® logo.



Figure 3: Intel® IT Director branding window

The second is the branding window located at the bottom of the IT Director main user interface (see Figure 3). The branding window is visible for the duration of time the main user interface is displayed. The branding window can be hidden when the end user clicks the down arrow to collapse the window depicted in Figure 3. The window will remain collapsed until either the next platform reboot or the user reopens the branding window. By default, the branding window loads the default Intel® image shown in Figure 3.

Intel® partners can display images in place of the default Intel® image. Starting with IT Director version 1.5 all previous generation (IT Director v1.0 and v1.1) branding mechanisms are no longer supported.

Starting with IT Director version 1.5 Intel® partners have the ability to align separate branding images to each usage on the IT Director user interface. Intel® partners have the option of coupling an Intel® partner Internet URL addresses with their respective branding window image. The end user experiences updates to the branding window based on their focus. The end user optionally experiences the IT Director redirection feature when they click on the branding window while the main user interface displays the partner branding image. The IT Director application automatically launches the registered default Operating System Internet Browser and redirects the browser to the Intel® partner provided URL.

Intel® IT Director Co-Branding Logo



Figure 4: Intel® IT Director co-branding logo area

IT Director Co-Branding Logo – Technical Details

Intel® partners have the option of co-branding the IT Director main user interface. To use this feature the Intel® partner must place a properly formatted image in the root folder of the IT Director install path ([Drive Letter]:\[IT Director Install Path]\).

Example:

<c:\Program Files\Intel\IntelITDirector>

The file format for the co-branding image must be a .PNG (portable network graphics) file type. IT Director version 1.5 only supports .PNG files.

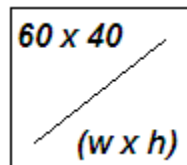


Figure 5: Intel® IT Director co-branding logo optimal image dimensions

NOTE

The co-branding image must be entitled “Logo.png”

Figure 5 is a dimensions model the third party co-branding logo image should adhere to for best results. The image should maintain a width to height ratio of 6 to 4. Images that do not meet these requirements will be rendered on the main user interface and may be illegible. The Intel® IT Director main user interface will load the image regardless of its dimensions.

NOTE

The best method to retrieve the IT Director install path is to read it from a registry value in the Microsoft Windows Operating System:

1. Windows Operating System registry location:
[HKEY_LOCAL_MACHINE/SOFTWARE/Intel/Intel\(R\) IT Director/Common](#)
2. Windows Operating System registry value name:

InstallDir

The “InstallDir” registry value is the same on Microsoft Windows XP and Microsoft Vista operating systems.

Once the Intel® partner successfully places the co-branding logo image in the IT Director install path folder and reboots the operating system the IT Director main user interface will display co-branding logo image.

NOTE

Only one (1) .PNG co-branding image is supported. Entitled “Logo.png”.

IT Director Co-Branding Logo – Four Step Guide

Below is a four step guide describing how an Intel® partner can reuse the Intel® provided material to add a co-branding logo image to the IT Director installation material. Below is a list of the material needed to use the Four Step Guide

Material Needed:

- Intel® Partner co-branding logo image
 - Intel® Partner is responsible to provide the “Logo.png” file
- Intel® IT Director “SilentInstallForXP.bat” and “SilentInstallForVista.bat” files
 - Files found in the Intel® provided IT Director v1.5 install bundle
- Sample co-branding Visual Basic script
 - Found on page 9

Step 1

The Intel® partner creates a properly formatted co-branding logo image. The image must comply with the .PNG (portable network graphics) file format standard. It must also be entitled “Logo.png”. For best results, images should have a width to height ratio of 6 to 4 (see Figure 5).

Step 2

The Intel® partner must copy the entire contents of page 9 into a Visual Basic Script. The sample script, when executed, retrieves the IT Director folder path from the Microsoft Windows registry and copies the co-branding logo image into the IT Director root folder path. The Intel® partner must copy the sample script into a file with the following name and file type:

`Co_Branding_Image.vbs`

`[File Name = Co_Branding_Image].[File Type = vbs]`

The sample script supports Microsoft Windows XP and Microsoft Vista Operating Systems.

Step 3

The Intel® partner must open for Edit the silent installation batch files provided by Intel®. Intel® provided two files that need to be edited. The first supports Microsoft Windows XP (“SilentInstallForXP.bat”) and the second supports Microsoft Vista (“SilentInstallForVista.bat”).

At the end of each file the Intel® partner must append the name of the newly created Visual Basic Script to the end of file.

Material to append to file:

[Co_Branding_Image](#)

Step 4

The Intel® partner must create a new IT Director version 1.5 install bundle. The following tasks must be performed.

- Add the co-branding logo image to the IT Director install bundle
- Add the “Co_Branding_Image.vbs” file to the IT Director install bundle
- Replace the silent installation batch files with the newly created files

```

'-----
' Sample Visual Basic Script which Intel (R) partners can reuse to
' populate their branding Bitmap images into the IT Director Advertisement
' Folder
'-----
Const HKEY_LOCAL_MACHINE = &H80000002
Const FOF_CREATEPROGRESSDLG = &H0&

dim objShell
dim objFolder

strComputer = "."

'-----
' Read the IT Director Installation Path from the Windows Registry
'-----
set oReg=GetObject("winmgmts:{impersonationLevel=impersonate}!\\" & _
strComputer & "\root\default:StdRegProv")

strKeyPath = "SOFTWARE\Intel\Intel(R) IT Director\Common"
strValueName = "InstallDir"
oReg.GetStringValue HKEY_LOCAL_MACHINE,strKeyPath,strValueName,strValue

destpathfin = strvalue
destpathtemp = strvalue & "ITDISVTempADs"

'-----
' Determine if Operating System is Vista or Windows XP
'-----
set objWMIService = GetObject("Winmgmts:\\" & strComputer & "\root\cimv2")

Set colltems = objWMIService.ExecQuery("Select * From Win32_OperatingSystem")

For Each objItem in colltems
  If Instr(objItem.Caption, "Vista") Then
    If WScript.Arguments.Length=0 Then
      '-----
      ' Vista Requires we cache the Bitmap images into a temporary
      ' folder before requesting permission from the End User to
      ' raise the Vista UAC Access for the script
      '-----
      set objFSO = CreateObject("Scripting.FileSystemObject")

      If objFSO.FolderExists(destpathtemp) Then
        Else
          set objFolderCreate = objFSO.CreateFolder(destpathtemp)
        End If

      objFSO.CopyFile strComputer & "\*.png", destpathtemp, true

      Set objShell = CreateObject("Shell.Application")
      'Pass a bogus argument with leading blank space, say [ uac]
      objShell.ShellExecute "wscript.exe", Chr(34) & _
      WScript.ScriptFullName & Chr(34) & " uac", "", "runas", 1
    Elseif WScript.Arguments.Length=1 Then
      '-----
      ' After UAC access has been granted by the end user the Bitmap
      ' images will be copied into the IT Director ads folder
      ' The copy will result in overwriting the existing Bitmap
      ' images
      '-----
      Set objWMIService = GetObject("winmgmts:\\" & strComputer & "\root\cimv2")

      Set colFolders = objWMIService.ExecQuery _
      ("Select * from Win32_Directory Where FileName = 'ITDISVTempADs'")

      For Each objFolder in colFolders
        srcpath = objFolder.Name
        Next

        set objFSO = CreateObject("Scripting.FileSystemObject")

        If objFSO.FolderExists(destpathfin) Then
          Else
            set objFolderCreate = objFSO.CreateFolder(destpathfin)
          End If

          objFSO.CopyFile srcpath & "\*.png", destpathfin, true
        End If
      Else
        '-----
        ' Win XP we create the folder and copy the Bitmap images into
        ' the IT Director ads folder
        '-----
        set objFSO = CreateObject("Scripting.FileSystemObject")

        If objFSO.FolderExists(destpathfin) Then
          Else
            set objFolderCreate = objFSO.CreateFolder(destpathfin)
          End If

          set objShell = CreateObject("Shell.Application")
          set objFolder = objShell.NameSpace(destpathfin)

          objFolder.CopyHere strComputer & "\*.png", FOF_CREATEPROGRESSDLG
        End If
      Next

```

Intel® IT Director Branding Window



Figure 6: Intel® IT Director branding window

IT Director Branding Window – Technical Details

Intel® partners have a second mechanism to brand the IT Director main user interface by using the branding window (see Figure 6). The branding window allows Intel® partners to display .BMP (Bitmap) images and associate one Internet URL for end user click through redirection to a web site. The IT Director main user interface determines which image to display based on end user focus.



Figure 7: User interface – end user focus not set



Figure 8: User interface – end user focus set

Setting focus occurs when the end user mouse clicks and expands an IT Director usage heading on either the My Computer or My Network tabs (see Figure 4). Figure 7 is a sample of the IT Director Software Health Monitor – Advanced usage when the end user has **not** set focus on the usage. Figure 8 is a sample of the same Software Health Monitor – Advanced usage with end user focus set.

Intel® partners have an opportunity to add multiple branding window images for each usage. If more than one image is added the IT Director main user interface will continuously cycle through each image until either the main user interface is closed, the user changes focus to a different usage, or the end user hides the branding window.

Figure 9 is a model of the dimensions the third party branding window image should adhere to. For best results, images should have a width to height ratio of 55 to 8, or approximately 7 to 1. Images that do not meet these requirements may be illegible in the branding window area. The IT Director user interface loads the image regardless of its dimensions.

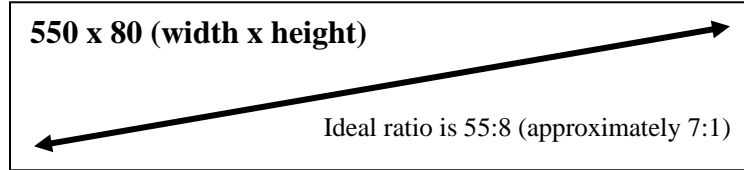


Figure 9: Intel® IT Director branding optimal image dimensions



NOTE

Only .BMP (Bitmap) file formats are supported

To add branding window images to IT Director the Intel® partner must establish a relationship between the Intel® partner image, Intel® partner click through URL for the image and the IT Director usage the image corresponds to. The Intel® partner must add a properly formatted entry in the Windows Operating System registry and place the image in a folder on the local PC hard drive.

Example of image placement path:

([Drive Letter]:\Program Files\Intel\IntelITDirector\ads)

<C:\Program Files\Intel\IntelITDirector\ads>

The registry entry must be placed at a specific location under the IT Director branch of the Windows Registry. For each IT Director usage there is a three letter acronym. The Intel® partner is responsible for creating the appropriate Windows Registry entry Key followed by Windows Registry entry Values.

IT Director Windows Registry Location:

[My Computer\HKEY_LOCAL_MACHINE\SOFTWARE\Intel\Intel\(R\) IT Director\ISVReferences](#)

IT Director Windows Registry Usage Key:

[Windows Registry Entry Type = KEY](#)

IT Director Usage	Registry Usage Key Name	Resulting Windows Registry Path
Replace Intel®	INI	\HKEY_LOCAL_MACHINE\SOFTWARE\Intel\Intel(R)

Default Image		IT Director\ISVReferences\INI
USB Blocking Policy	USB	\HKEY_LOCAL_MACHINE\SOFTWARE\Intel\Intel(R) IT Director\ISVReferences\USB
Hard Drive Backup and Restore	BNR	\HKEY_LOCAL_MACHINE\SOFTWARE\Intel\Intel(R) IT Director\ISVReferences\BNR
Software Health Monitoring	SHM	\HKEY_LOCAL_MACHINE\SOFTWARE\Intel\Intel(R) IT Director\ISVReferences\SHM
Power-on Monitor	POM	\HKEY_LOCAL_MACHINE\SOFTWARE\Intel\Intel(R) IT Director\ISVReferences\POM
Hard Drive Free Space	HDS	\HKEY_LOCAL_MACHINE\SOFTWARE\Intel\Intel(R) IT Director\ISVReferences\HDS

IT Director Windows Registry Partner Image Value:

After completing the creation of the IT Director Usage Key. The Intel® partner can now create individual keys for each of their respective images. For each image key the partner must create sub key(s). Each sub key must have two value parameters. The first is the folder location for where the image resides appended with the name of the bitmap image, while the second is the Internet URL for where the default browser should be redirected.

- Windows Registry Entry Type = KEY
- Windows Registry Key Name = [Intel® partner generate name]
 - Windows Registry Entry Type = String Value
 - Windows Registry String Value Name = "Image"
 - Windows Registry String Value Content = [Intel® partner drive path appended with image name]
 - Windows Registry Entry Type = String Value
 - Windows Registry String Value Name = "URL"
 - Windows Registry String Value Content = [Intel® partner internet URL]

Example:

[HKEY_LOCAL_MACHINE\SOFTWARE\Intel\Intel(R) IT Director\ISVReferences\USB\Image1]

Image = "file:///C:/Program Files/Intel/IntelITDirector/ads/IntelSample.bmp"

URL = "http://www.intel.com"

The above information is supported on Microsoft Windows XP and Microsoft Vista.

IT Director Branding Window – Five Step Guide

Below is a five step guide describing how an Intel® partner can reuse the Intel® provided material to add a branding window image(s) to the IT Director installation material. Below is a list of the material needed to use the Five Step Guide

Material Needed:

- Intel® Partner branding window image(s)
 - Intel® Partner is responsible to provide
- Intel® IT Director “SilentInstallForXP.bat” and “SilentInstallForVista.bat” files
 - Files found in the Intel® provided IT Director v1.5 install bundle
- Sample branding window Visual Basic script
 - Found on page 16 and 17

STEP 1

The Intel® partner creates properly formatted branding window image(s). The image(s) must comply with the .BMP (Bitmap) file format standard. For best results, images should have a width to height ratio of 7 to 1 (see Figure 9).

STEP 2

The Intel® partner must create an organized cohesive list of branding window requests. To use the Intel® provided sample script the Intel® partner is responsible for creating an image request text file. Each individual line in the text file must contain all of the necessary information to add one branding window image to the IT Director Windows registry. On each line, in the text file, data must be separated by commas. At the end of the line an “End of Line” character must be present. If the Intel® partner is using a standard text editor the End Of Line character is already provided when the “Enter” key is pressed:

Mandatory Text File Name:

[ITDirectorAds.txt](#)

Mandatory Text File Line Format:

[\[Registry Usage Key Name\],\[Intel Partner Name\],\[Bitmap Image Name\],\[URL\]](#)

Example Text File:

```
INI,Third Party Corp,Logo_01.bmp,www.3rdParty.com[EOL]
USB,Third Party Corp,Logo_02.bmp,www.3rdParty.com[EOL]
[EOF]
```

The first line in the above example translates to the following change:

- [INI] Associates an Intel® partner image with the Intel® Default Image
- [Third Party Corp] Creates a Windows Registry Key using the name “Third Party Corp”
- [Logo.bmp] Sets the Windows Registry Value Name “Image” to point to the Bitmap file “Logo_01.bmp” stored in folder path [Drive Letter]:\[IT Director Install Path]\Ads\.

- [www.3rdParty.com] Sets the Windows Registry Value Name "URL" to the Intel® partner URL.

The Intel® Partner should create and append separate text file lines for each branding window image.

STEP 3

The Intel® partner must copy the entire contents of page 16 and 17 into a Visual Basic Script. The script must be named:

["Copy_ITDirector_BrandImages.vbs"](#)

[\[File Name = Copy_ITDirector_BrandImages\].\[File Type = vbs\]](#)

The sample script, when executed will perform the following steps:

1. Retrieve the IT Director install folder path from the Microsoft Windows registry
2. Create an "\ads" subfolder under the IT Director install folder path
3. Copy Intel® partner bitmap files into the "\ads" folder
4. Open the "ITDirectorAds.txt" file
5. Parse each line of the text file to create individual Windows Registry entries
6. Close the "ITDirectorAds.txt" file

Step 4

The Intel® partner must open for Edit the silent installation batch files provided by Intel®. Intel® provided two files that require editing. The first supports Microsoft Windows XP ("SilentInstallForXP.bat") and the second supports Microsoft Vista ("SilentInstallForVista.bat").

At the end of each file the Intel® partner must append the name of the newly created Visual Basic Script to the end of file.

Material to append to file:

[Copy_ITDirector_BrandImages](#)

Step 5

The Intel® partner must create a new IT Director version 1.5 install bundle. The following tasks must be performed.

- Add the branding window image(s) to the IT Director install bundle
- Add the "Copy_ITDirector_BrandImages.vbs" file to the IT Director install bundle
- Add the "ITDirectorAds.txt" file to the IT Director install bundle

- Replace the silent installation batch files with the newly created files
- **Removing branding window material:** Page eighteen (18) contains a sample Visual Basic Script that reads the text file from the IT Director Install Folder “\ads” folder, parses the file and removes the branding window registry keys from the Windows Registry. This Script supports Microsoft Windows XP and Microsoft Vista.

```

'-----
' Sample Visual Basic Script which Intel (R) partners can reuse to
' populate branding Bitmap images into the IT Director
'-----
Const HKEY_LOCAL_MACHINE = &H80000002
Const FOF_CREATEPROGRESSDLG = &H0&

dim objShell
dim objFolder

strComputer = "."

'-----
' Read the IT Director Installation Path from the Windows Registry
'-----
set oReg=GetObject("winmgmts:{impersonationLevel=impersonate}!\\" & _
strComputer & "\root\default:StdRegProv")

strKeyPath = "SOFTWARE\Intel\Intel(R) IT Director\Common"
strValueName = "InstallDir"
oReg.GetStringValue HKEY_LOCAL_MACHINE,strKeyPath,strValueName,strValue

destpathfin = strvalue & "ads"
destpathtemp = strvalue & "ITDISVTempADS"

'-----
' Determine if Operating System is Vista or Windows XP
'-----
set objWMIService = GetObject("Winmgmts:\\" & strComputer & "\root\cimv2")

Set colItems = objWMIService.ExecQuery("Select * From Win32_OperatingSystem")

For Each objItem in colItems
If Instr(objItem.Caption, "Vista") Then
If WScript.Arguments.length =0 Then
'-----
' Vista Requires we cache the Bitmap images into a temporary
' folder before requesting permission from the End User to
' raise the Vista UAC Access for the script
'-----
set objFSO = CreateObject("Scripting.FileSystemObject")

If objFSO.FolderExists(destpathtemp) Then
Else
set objFolderCreate = objFSO.CreateFolder(destpathtemp)
End If

objFSO.CopyFile strComputer & "\*.bmp", destpathtemp, true
objFSO.CopyFile strComputer & "\*.txt", destpathtemp, true

Set objShell = CreateObject("Shell.Application")
'Pass a bogus argument with leading blank space, say [ uac]
objShell.ShellExecute "wscript.exe", Chr(34) & _
WScript.ScriptFullName & Chr(34) & " uac", "", "runas", 1
Elseif WScript.Arguments.length =1 Then
'-----
' After UAC access has been granted by the end user the Bitmap
' images will be copied into the IT Director ads folder
' The copy will result in overwriting the existing Bitmap
' images
'-----
Set objWMIService = GetObject("winmgmts:\\" & strComputer & "\root\cimv2")

Set colFolders = objWMIService.ExecQuery _
("Select * from Win32_Directory Where FileName = 'ITDISVTempADS'")

For Each objFolder in colFolders
srcpath = objFolder.Name
Next

set objFSO = CreateObject("Scripting.FileSystemObject")

If objFSO.FolderExists(destpathfin) Then
Else
set objFolderCreate = objFSO.CreateFolder(destpathfin)
End If

objFSO.CopyFile srcpath & "\*.bmp", destpathfin, true
objFSO.CopyFile srcpath & "\*.txt", destpathfin, true

destpathfin = destpathfin & "\"
End If
Else
'-----
' Win XP we create the folder and copy the Bitmap images into
' the IT Director ads folder
'-----
destpathfin = destpathfin & "\"

set objFSO = CreateObject("Scripting.FileSystemObject")

If objFSO.FolderExists(destpathfin) Then
Else
set objFolderCreate = objFSO.CreateFolder(destpathfin)
End If

set objShell = CreateObject("Shell.Application")
set objFolder = objShell.NameSpace(destpathfin)

objFolder.CopyHere strComputer & "\*.bmp", FOF_CREATEPROGRESSDLG
objFolder.CopyHere strComputer & "\*.txt", FOF_CREATEPROGRESSDLG
End If

```

```
'-----  
' Update the IT Director Registry Usage Key with Intel Partner  
' images and URL. Partner data must be contained in a properly  
' formatted Text file  
'-----  
if objFSO.FileExists(destpathfin & "ITDirectorAds.txt") Then  
    set objFile = objFSO.OpenTextFile(destpathfin & "ITDirectorAds.txt")  
  
    Do Until objFile.AtEndOfStream  
        strLine = objFile.ReadLine  
        arrItems = Split(strLine,",",-1,1)  
  
        strUsage = arrItems(0)  
        strVendorName = arrItems(1)  
        strImageName = arrItems(2)  
        strURL = arrItems(3)  
  
        strKeyPath = "SOFTWARE\Intel\Intel(R) IT Director\ISVReferences" & strUsage & "\" & strVendorName  
        Return = oReg.CreateKey(HKEY_LOCAL_MACHINE,strKeyPath)  
  
        If (Return = 0) And (Err.Number = 0) Then  
            strValueName = "Image"  
            strValue = destpathfin & strImageName  
  
            Return = oReg.SetStringValue(HKEY_LOCAL_MACHINE,strKeyPath,strValueName,strValue)  
  
            strValueName = "URL"  
            strValue = strURL  
  
            Return = oReg.SetStringValue(HKEY_LOCAL_MACHINE,strKeyPath,strValueName,strValue)  
        End If  
    Loop  
  
    objFile.Close  
  
End If  
Next
```

```

' Sample Visual Basic Script which Intel (R) partners can reuse to
' Delete branding Bitmap images from IT Director
'-----
Const HKEY_LOCAL_MACHINE = &H80000002
Const FOF_CREATEPROGRESSDLG = &H0&

dim objShell
dim objFolder

strComputer = "."

proceed = "false"
'-----
' Read the IT Director Installation Path from the Windows Registry
'-----
set oReg=GetObject("winmgmts:(impersonationLevel=impersonate)!\\" & _
strComputer & "\root\default:StdRegProv")

strKeyPath = "SOFTWARE\Intel\Intel(R) IT Director\Common"
strValueName = "InstallDir"
oReg.GetStringValue HKEY_LOCAL_MACHINE, strKeyPath, strValueName, strValue

destpathfin = strvalue & "ads" & "\"

'-----
' Determine if Operating System is Vista or Windows XP
'-----
set objWMIService = GetObject("Winmgmts:\\" & strComputer & "\root\cimv2")

Set colltems = objWMIService.ExecQuery("Select * From Win32_OperatingSystem")

For Each objItem in colltems
  If Instr(objItem.Caption, "Vista") Then
    If WScript.Arguments.length = 0 Then
      '-----
      ' Request permission from the End User to
      ' raise the Vista UAC Access for the script
      '-----
      Set objShell = CreateObject("Shell.Application")
      'Pass a bogus argument with leading blank space, say [ uac]
      objShell.ShellExecute "wscript.exe", Chr(34) & _
      WScript.ScriptFullName & Chr(34) & " uac", "", "runas", 1
    Elseif WScript.Arguments.length = 1 Then
      '-----
      ' UAC access has been granted by the end user
      ' Place holder for actions specific to Vista
      '-----
      proceed = "true"
    End If
  Else
    '-----
    ' Place holder for actions specific to WinXP
    '-----
    proceed = "true"
  End If
  '-----
  ' Open the properly formatted text file and remove the local images
  ' and remove the entries in the IT Director Registry Usage Keys
  '-----
  set objFSO = CreateObject("Scripting.FileSystemObject")

  if proceed = "true" Then
    if objFSO.FileExists(destpathfin & "ITDirectorAds.txt") Then
      set objFile = objFSO.OpenTextFile(destpathfin & "ITDirectorAds.txt")

      Do Until objFile.AtEndOfStream
        strLine = objFile.ReadLine
        arrItems = Split(strLine, ",", -1, 1)

        strUsage = arrItems(0)
        strVendorName = arrItems(1)
        strImageName = arrItems(2)

        strKeyPath = "SOFTWARE\Intel\Intel(R) IT Director\ISVReferences\" & strUsage & "\" & strVendorName
        Return = oReg.DeleteKey(HKEY_LOCAL_MACHINE, strKeyPath)

        If (Return = 0) And (Err.Number = 0) Then
          strValue = destpathfin & strImageName

          objFSO.DeleteFile strValue
        End If
      Loop

      objFile.Close

      strValue = destpathfin & "ITDirectorAds.txt"

      objFSO.DeleteFile strValue
    End If
  End If
Next

```



*Other names and brands may be claimed as the property of others

Copyright © 2009 Intel Corporation. All rights reserved.

Intel®, the Intel logo, Intel. Leap ahead™, the Intel Leap ahead™ Logo, Centrino®, the Centrino® logo, Intel® Core™, vPro™, the vPro™ logo, Intel SpeedStep™, Pentium®, and Celeron® are registered trademarks of Intel Corporation in the United States and other countries.

Microsoft, Windows, and the Windows logo are trademarks, or registered trademarks of Microsoft Corporation in the United States and/or other countries

INFORMATION IN THIS DOCUMENT IS PROVIDED IN CONNECTION WITH INTEL PRODUCTS. NO LICENSE, EXPRESS OR IMPLIED, BY ESTOPPEL OR OTHERWISE, TO ANY INTELLECTUAL PROPERTY RIGHTS IS GRANTED BY THIS DOCUMENT. EXCEPT AS PROVIDED IN INTEL'S TERMS AND CONDITIONS OF SALE FOR SUCH PRODUCTS, INTEL ASSUMES NO LIABILITY WHATSOEVER AND INTEL DISCLAIMS ANY EXPRESS OR IMPLIED WARRANTY, RELATING TO SALE AND/OR USE OF INTEL PRODUCTS INCLUDING LIABILITY OR WARRANTIES RELATING TO FITNESS FOR A PARTICULAR PURPOSE, MERCHANTABILITY, OR INFRINGEMENT OF ANY PATENT, COPYRIGHT OR OTHER INTELLECTUAL PROPERTY RIGHT.

UNLESS OTHERWISE AGREED IN WRITING BY INTEL, THE INTEL PRODUCTS ARE NOT DESIGNED NOR INTENDED FOR ANY APPLICATION IN WHICH THE FAILURE OF THE INTEL PRODUCT COULD CREATE A SITUATION WHERE PERSONAL INJURY OR DEATH MAY OCCUR.

Intel may make changes to specifications and product descriptions at any time, without notice. Designers must not rely on the absence or characteristics of any features or instructions marked "reserved" or "undefined." Intel reserves these for future definition and shall have no responsibility whatsoever for conflicts or incompatibilities arising from future changes to them. The information here is subject to change without notice. Do not finalize a design with this information.

The products described in this document may contain design defects or errors known as errata which may cause the product to deviate from published specifications. Current characterized errata are available on request.

Contact your local Intel sales office or your distributor to obtain the latest specifications and before placing your product order.

Copies of documents which have an order number and are referenced in this document, or other Intel literature, may be obtained by calling 1-800-548-4725, or by visiting Intel's Web Site.

Intel Corporation may have patents or pending patent applications, trademarks, copyrights, or other intellectual property rights that relate to the presented subject matter. The furnishing of documents and other materials and information does not provide any license, express or implied, by estoppel or otherwise, to any such patents, trademarks, copyrights, or other intellectual property rights.

Intel may make changes to specifications and product descriptions at any time, without notice.

Intel® Active Management Technology requires the computer system to have an Intel(R) AMT-enabled chipset, network hardware and software, as well as connection with a power source and a corporate network connection. Setup requires configuration by the purchaser and may require scripting with the management console or further integration into existing security frameworks to enable certain functionality. It may also require modifications of implementation of new business processes. With regard to notebooks, Intel AMT may not be available or certain capabilities may be limited over a host OS-based VPN or when connecting wirelessly, on battery power, sleeping, hibernating or powered off. For more information, see here <http://www.intel.com/technology/platform-technology/intel-amt/>