

Getting Started with Intel® IT Director

Document Number: 320314-002US

Contents

Legal Information

1 Product Overview

2 Getting Started

- 2.1 Installing Intel® IT Director
- 2.2 Configuring Computers for Remote Monitoring
- 2.3 Setting up the Manageability Capability
- 2.4 Starting to Use Intel® IT Director



Legal Information

INFORMATION IN THIS DOCUMENT IS PROVIDED IN CONNECTION WITH INTEL® PRODUCTS. NO LICENSE, EXPRESS OR IMPLIED, BY ESTOPPEL OR OTHERWISE, TO ANY INTELLECTUAL PROPERTY RIGHTS IS GRANTED BY THIS DOCUMENT. EXCEPT AS PROVIDED IN INTEL'S TERMS AND CONDITIONS OF SALE FOR SUCH PRODUCTS, INTEL ASSUMES NO LIABILITY WHATSOEVER, AND INTEL DISCLAIMS ANY EXPRESS OR IMPLIED WARRANTY, RELATING TO SALE AND/OR USE OF INTEL PRODUCTS INCLUDING LIABILITY OR WARRANTIES RELATING TO FITNESS FOR A PARTICULAR PURPOSE, MERCHANTABILITY, OR INFRINGEMENT OF ANY PATENT, COPYRIGHT OR OTHER INTELLECTUAL PROPERTY RIGHT.

UNLESS OTHERWISE AGREED IN WRITING BY INTEL, THE INTEL PRODUCTS ARE NOT DESIGNED NOR INTENDED FOR ANY APPLICATION IN WHICH THE FAILURE OF THE INTEL PRODUCT COULD CREATE A SITUATION WHERE PERSONAL INJURY OR DEATH MAY OCCUR.

Intel may make changes to specifications and product descriptions at any time, without notice. Designers must not rely on the absence or characteristics of any features or instructions marked "reserved" or "undefined." Intel reserves these for future definition and shall have no responsibility whatsoever for conflicts or incompatibilities arising from future changes to them. The information here is subject to change without notice. Do not finalize a design with this information.

The products described in this document may contain design defects or errors known as errata which may cause the product to deviate from published specifications.

Current characterized errata are available on request.

Contact your local Intel sales office or your distributor to obtain the latest specifications and before placing your product order.

Copies of documents which have an order number and are referenced in this document, or other Intel literature, may be obtained by calling 1-800-548-4725, or by visiting [Intel's Web Site](#).

Intel processor numbers are not a measure of performance. Processor numbers differentiate features within each processor family, not across different processor families. See http://www.intel.com/products/processor_number for details.

This document contains information on products in the design phase of development.

BunnyPeople, Celeron, Celeron Inside, Centrino, Centrino Atom, Centrino Atom Inside, Centrino Inside, Centrino logo, Core Inside, FlashFile, i960, InstantIP, Intel, Intel logo, Intel386, Intel486, IntelDX2, IntelDX4, IntelSX2, Intel Atom, Intel Atom Inside, Intel Core, Intel Inside, Intel Inside logo, Intel. Leap ahead., Intel. Leap ahead. logo, Intel NetBurst, Intel NetMerge, Intel NetStructure, Intel SingleDriver, Intel SpeedStep, Intel StrataFlash, Intel Viiv, Intel vPro, Intel XScale, Itanium, Itanium Inside, MCS, MMX, Oplus, OverDrive, PDCharm, Pentium, Pentium Inside, skool, Sound Mark, The Journey Inside, Viiv Inside, vPro Inside, VTune, Xeon, and Xeon Inside are trademarks of Intel Corporation in the U.S. and other countries.

* Other names and brands may be claimed as the property of others.

Copyright (C) 2008-2009, Intel Corporation. All rights reserved.



1 Product Overview

Intel® IT Director enables you to improve the security and data protection of your computers and monitor vital data for up to 25 computers on your network. Specifically, Intel® IT Director helps you manage the following features:

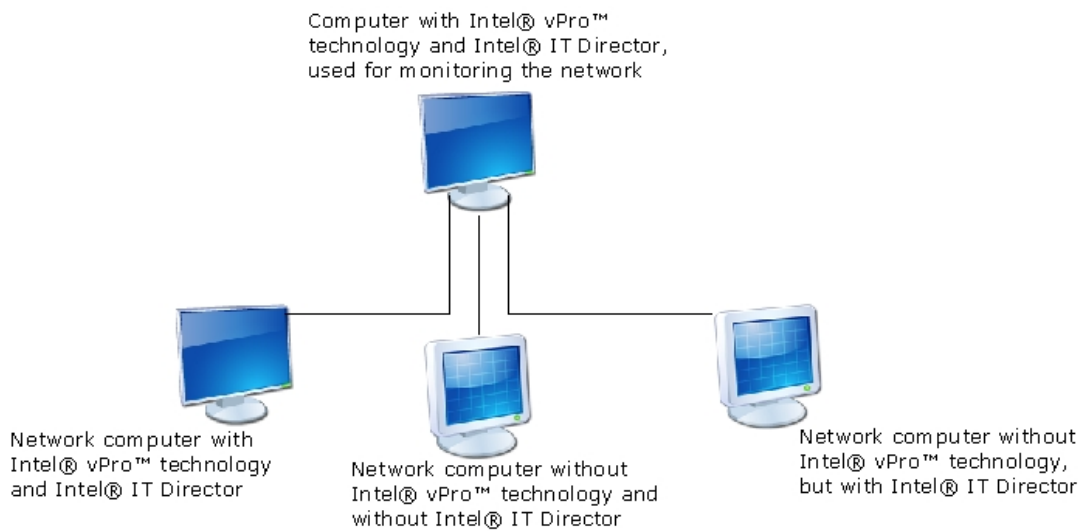
Feature	Benefit
Software Health Monitor	Monitor important software, including antivirus and firewalls. The Software Health Monitor always monitors whether this software is installed. The Advanced Mode monitors whether this software is running properly, and is available on computers with Intel® vPro™ technology or Intel® Standard Manageability.
Hard Drive Backup	Reduce risk of data loss, using Intel® Matrix Storage Technology or Microsoft Windows* Backup Wizard.
Hardware and Software Asset Monitor	Tracks which hardware and operating system are installed on computers in your network.
Hard Drive Space	Monitor space available on your hard drives. You specify a threshold and will be notified if the available space drops below the threshold.
Power-on Monitor	Track whether computers are powered on only when they should be to help lower your energy bills.
USB Device Blocking	Prevent unwanted use of USB devices to reduce risk of virus infection and increase data security.



You can configure the policies for monitoring network computers. When a computer on your network violates a policy, Intel® IT Director displays a warning message. For example, if you set a policy that requires antivirus software to be running, and antivirus software is not running on a computer in your network, you will receive a warning message.

Here is a diagram of a sample small network:

Figure 1: Small Sample Network





2 Getting Started

To get started with Intel® IT Director:

1. Launch the installation tool (ITDirector_Setup.exe) on all computers that do not have Intel® IT Director pre-installed. The installation tool determines what steps to take.
2. [Configure each computer](#) you want Intel® IT Director to remotely monitor.
3. On computers with Intel® vPro™ technology or Intel® Standard Manageability technology, or Level III manageability upgrade: [Set up the manageability capability](#), to use the Advanced Software Health Monitor.
4. [Start using Intel® IT Director](#).

NOTE: The Windows* user account that you logged on before installing Intel® IT Director will be granted the full privilege to access all Intel® IT Director features on that computer. Other Windows* user accounts can not access the **Settings** tab of the Intel® IT Director. Before you run the Intel® IT Director installer on each computer, please make sure you have logged on Windows* using the user account that you wish to give full access to all Intel® IT Director user interface on that computer .

2.1 Running Intel® IT Director

If Intel® IT Director is not pre-installed on a computer you want to monitor, run the Intel® IT Director installation tool (ITDirector_Setup.exe) on that computer. The installation tool automatically determines what steps to take.

If the operating system is Microsoft Window XP*, make sure the pre-requisite installation package ITDirector_Prerequisite_ForWindowsXP.pak is located in the same folder where you run the installation tool ITDirector_setup.exe.

If a computer does not support the Intel® IT Director application, the installation tool only configures the computer for remote monitoring, without installing the Intel® IT Director application. You can download the Intel® IT Director installation tool from:

<http://www.intel.com/go/itdirector>

Immediately after installation, the configuration tool starts configuring your computer for remote monitoring.



2.2 Configuring Computers for Remote Monitoring

The Intel® IT Director installation tool configures your computers to support remote monitoring with Intel® IT Director. You can use this tool on all computers on your network. If a computer does not support the Intel® IT Director application, the installation tool only configures the computer for remote monitoring, without installing the Intel® IT Director application.

To configure your computer for remote monitoring:

1. Run the installation tool:
 - On systems with Intel® IT Director pre-installed, the configuration tool automatically opens the first time you use Intel® IT Director.
 - Otherwise, run the file ITDirector_Setup.exe. You can download this file from: <http://www.intel.com/go/itdirector>
2. The Intel® IT Director configuration tool launches automatically after installation. On the first screen, accept the End User License Agreement (EULA).
3. The tool tells you that it will configure the firewall to accept incoming ICMP responses, which are used for remote monitoring. Click **Next** to continue.
4. Enter your desired password, and re-enter the password for confirmation. Use the same password on all computers in your network.
5. Click **Next**. The tool creates a Windows* OS account, and configures Windows* OS to allow remote queries from that account.
6. On computers with Vista* OS: Choose whether to check that the configuration was implemented correctly.
7. Choose whether to launch the Intel® IT Director application and click **Finish**.

2.3 Setting up the Manageability Capability

Intel® vPro™ technology and Intel® Standard Manageability support the Intel® IT Director manageability capability, which is used for the Advanced Software Health Monitor. The manageability capability enables you to remotely monitor whether system software is active on your computer.

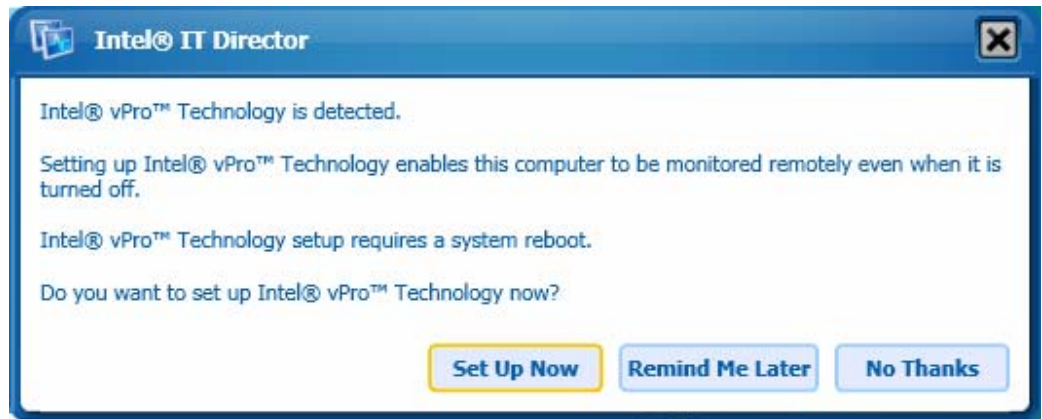
NOTE: Before starting manageability setup, verify that at least one other computer with Intel® IT Director is powered on and connected to your network.

NOTE: If the manageability capability has previously been set up by another software product, you will see an abbreviated version of this process.

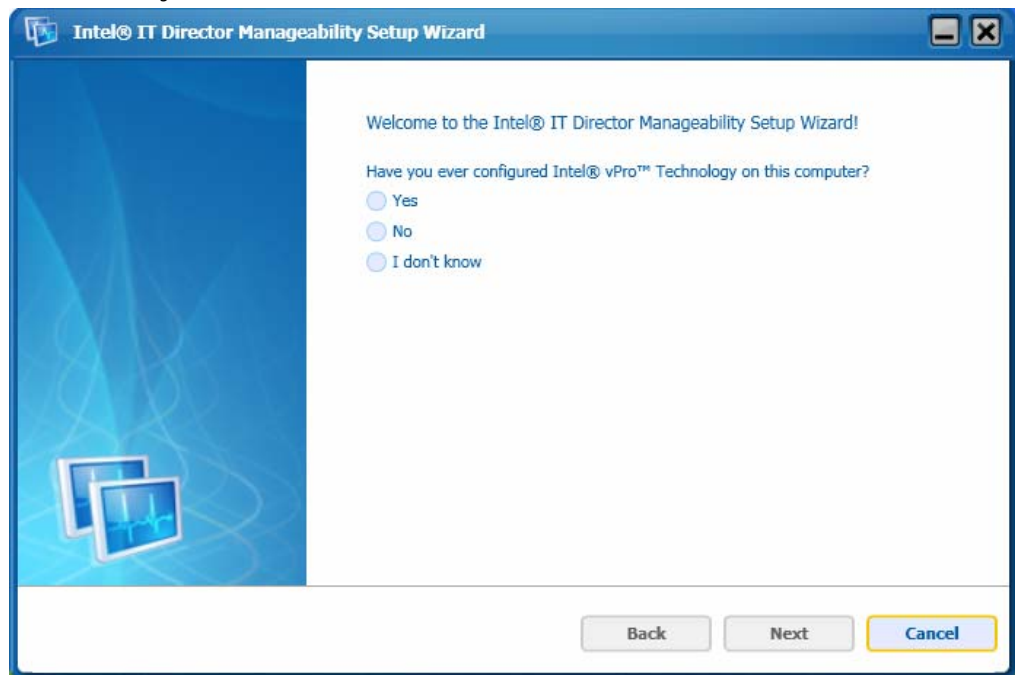


To set up the manageability capability:

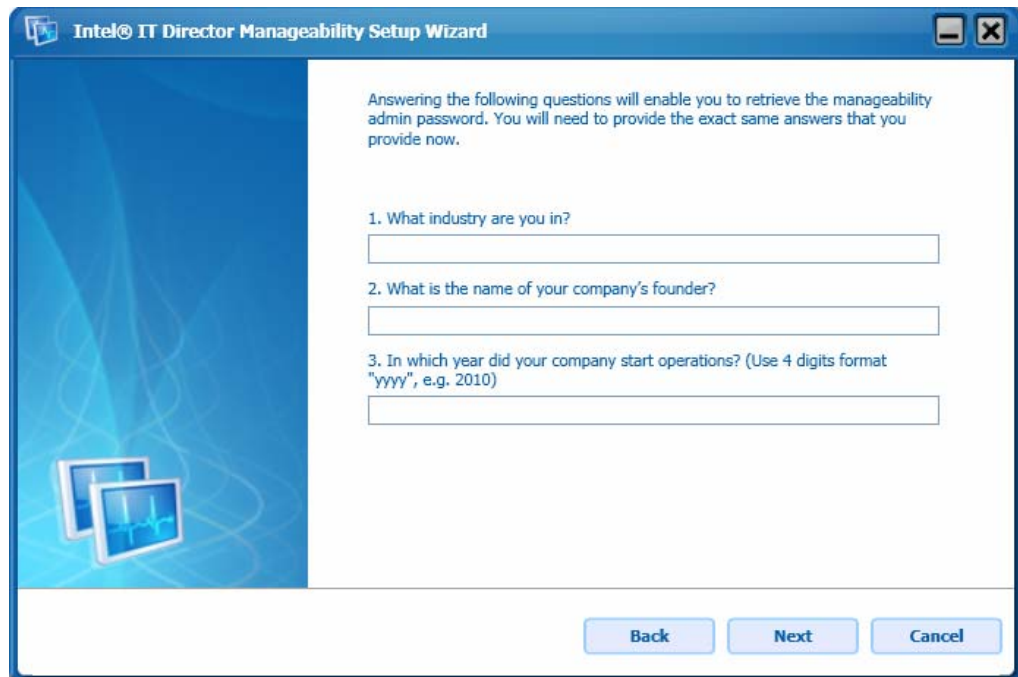
1. If your computer supports the manageability capability, Intel® IT Director asks you to open the manageability setup wizard the first time you open Intel® IT Director, click **Set Up Now**.



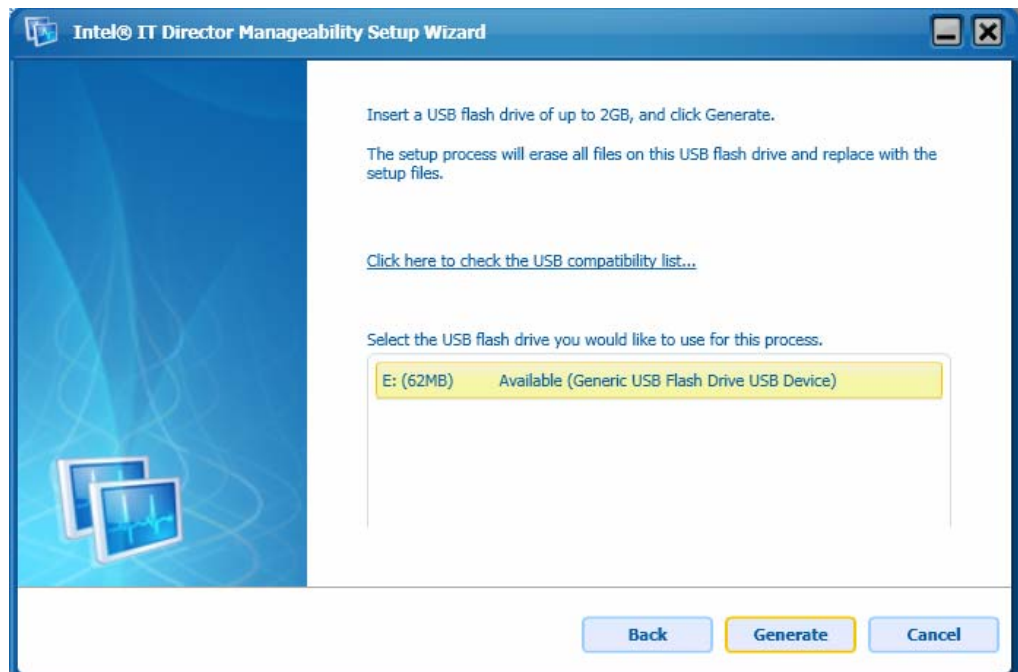
2. Select whether your manageability capability has been configured on this computer.
 - If yes, enter the manageability admin password from the previous setup.
 - If no or you don't know, follow the instructions on the screen.



3. Answer three password retrieval questions. To retrieve your password in the future, you will need to answer the questions as you do here. Click **Next**.

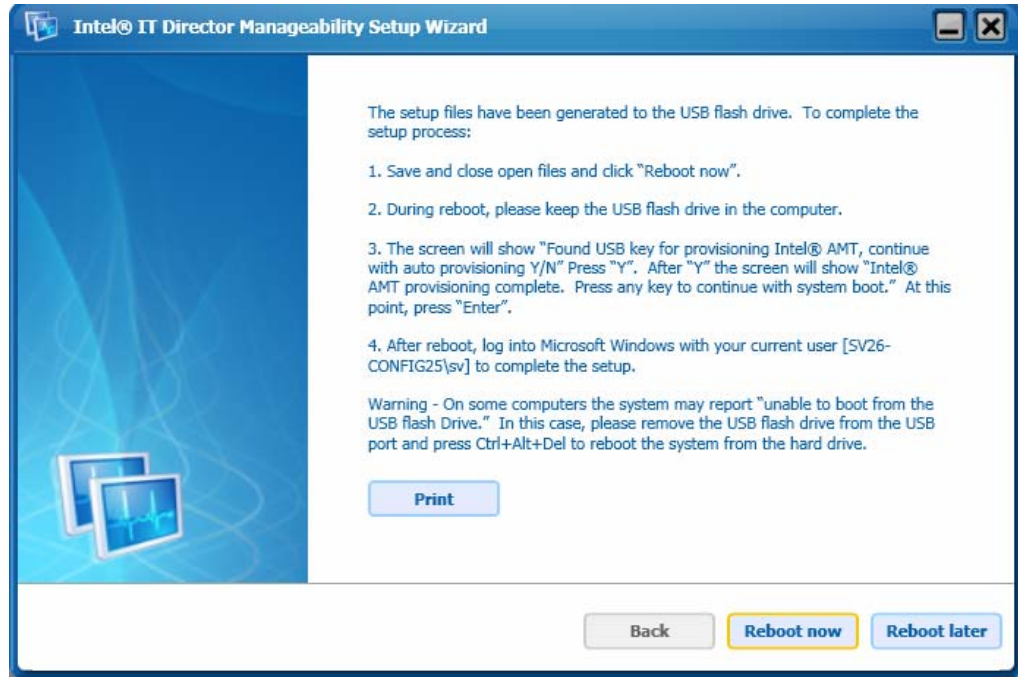


4. Select a connected USB drive on which to generate files needed for manageability setup, and click **Generate**. If your USB drive is not blank, all data on the drive will be erased.

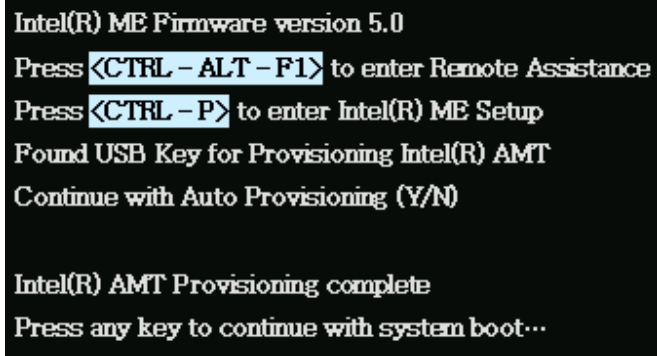




5. Manageability setup requires a reboot. To continue, save and close all open files and click **Reboot now**. Leave the USB drive connected to the system, for use later in the process.



During reboot, the following screen will ask if you want to **Continue with Auto Provisioning**. At that screen, press **Y** and press any key when prompted.



6. If there was a problem with the files on the USB drive, you will see an error screen. Follow the instructions in the error screen.
7. After the system reboots, manageability setup continues. If you cancel manageability setup, you return to this page the next time you open the Manageability Setup Wizard.
8. Once manageability setup succeeds, click **Finish**.



2.4 Starting to Use Intel® IT Director

Once you configure a computer for Intel® IT Director, you can start using Intel® IT Director on that computer. Intel® IT Director enables you to configure IT settings locally on each computer, and to remotely monitor all computers on your network from a central dashboard.

The Intel® IT Director application includes three tabs:



My Network	My Computer	Settings
Monitor status and warning messages for all computers on your network.	Configure software and security on your current computer.	Set user privileges, network requirements, and other Intel® IT Director settings.

To start using Intel® IT Director:

1. From the **My Computer** section of Intel® IT Director, configure Intel® IT Director settings for your computer.
2. If you are using this computer to monitor your network: From the **Settings** section of Intel® IT Director, set network requirements.
3. If you are using this computer to monitor your network: From the **My Network** section of Intel® IT Director, start monitoring your network.

For more details about using Intel® IT Director, see the **Intel® IT Director User's Guide**.

TIP: To use the same settings on all computers in your network, configure settings for one computer. Then go to the **Settings** tab and **Export** your settings to a USB device. On your other computers, go to the **Settings** tab and **Import** your settings from the USB device.